

Educational Effectiveness Survey™



9 Characteristics of High Performing Schools

Parent Longitudinal
edition

V3.2.1

South Whidbey Middle School

South Whidbey School District

'17-18

'19-20

N=129

N=63



Better Data. Better Decisions. Better Schools.



The Center for Educational Effectiveness (CEE) is a service, consulting, and research organization dedicated to the mission of partnering with K-12 schools to improve student learning.

NOTICE

The Center for Educational Effectiveness, Inc. (CEE) makes substantial effort to ensure the accurate scoring, analysis, and reporting of the results of the Educational Effectiveness Survey. However, CEE makes no warranty of any kind with regard to this material, including, but not limited to, the implied warranties of merchantability and fitness for a particular purpose. CEE shall not be liable for errors contained herein or for incidental or consequential damages in connection with the furnishing, performance, or use of this material.

No part of these materials may be copied, reproduced, republished, posted, modified, edited, transmitted, distributed, or used to create derivative works in any form or by any means without the prior written consent of Center for Educational Effectiveness, Inc. These materials are copyright protected under U.S. and international copyright laws and treaties. Violation of these laws will lead to prosecution.

Trademark notice: Center for Educational Effectiveness™ and affiliated logo, Better Data. Better Decisions. Better Schools.™ and affiliated logo, Educational Effectiveness Survey™, EES-Leadership 360™ are all trademarks of Center for Educational Effectiveness, Inc. All other trademarks cited here are the property of their respective owners.

Published by:
Center for Educational Effectiveness, Inc.
© 2003-2017 Center for Educational Effectiveness, Inc. All Rights Reserved.
Printed in the U.S.A.

Contact Information:
Phone: 425-283-0384
Fax: 425-947-0066
info@effectiveness.org..



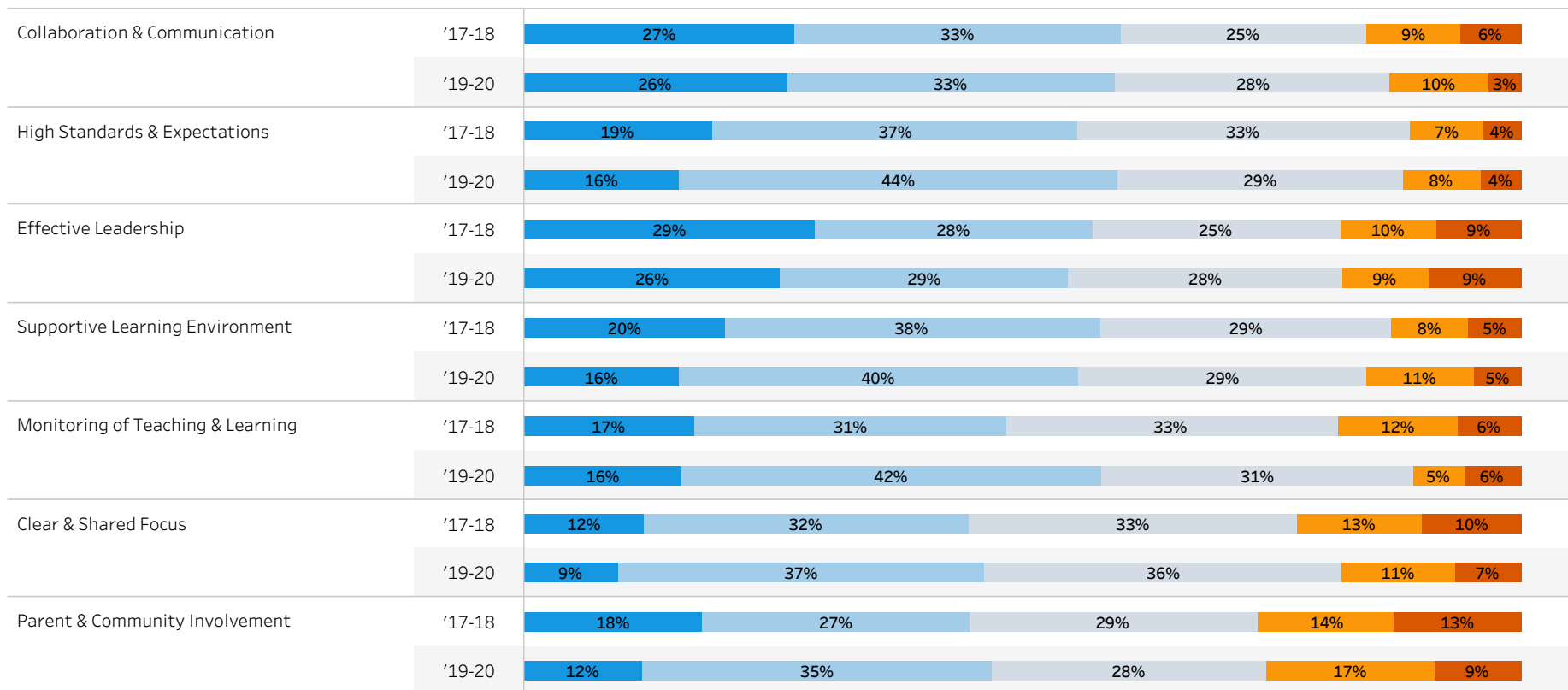
9 Characteristics of High-Performing Schools



9 Characteristics Parent Summary

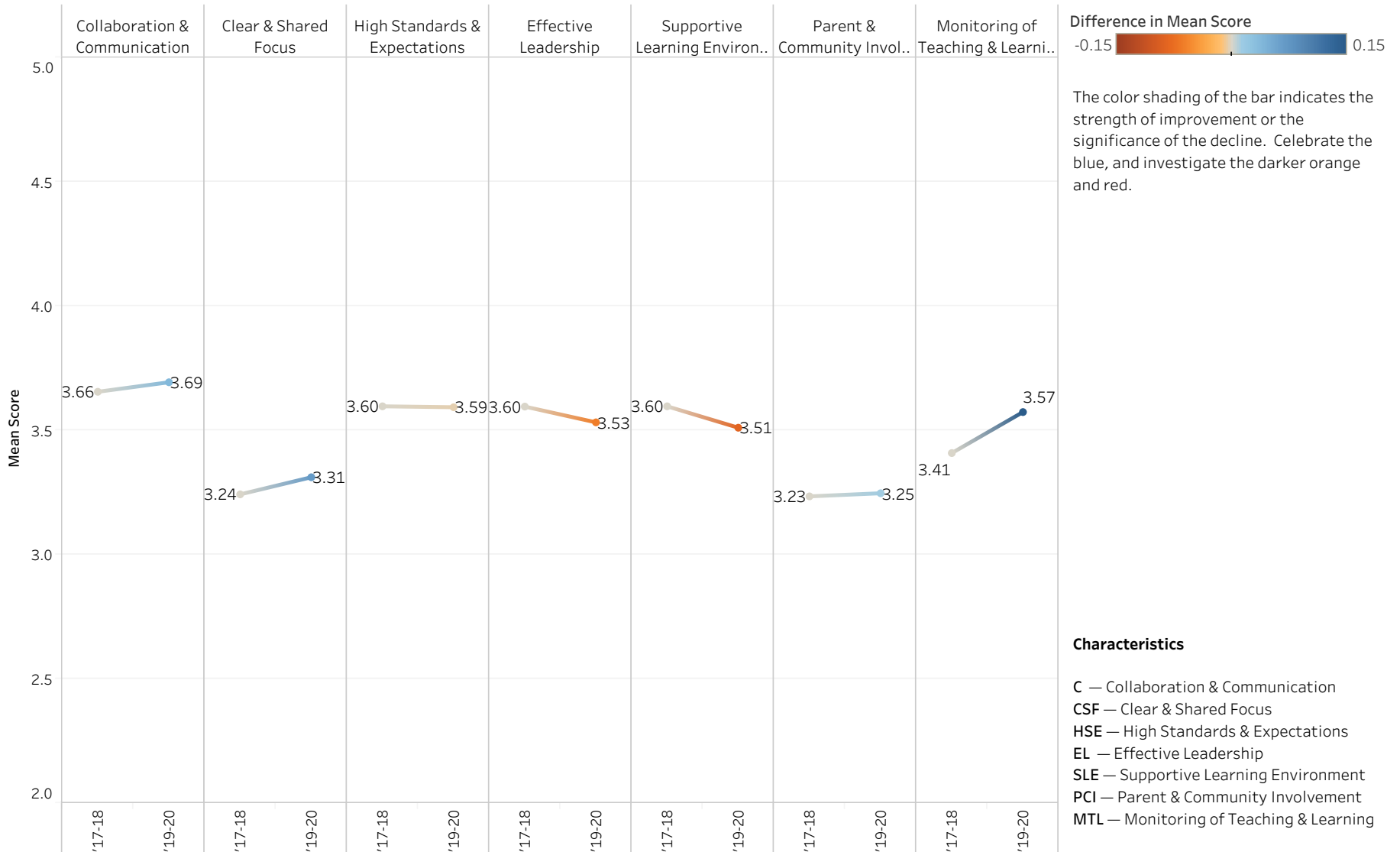
South Whidbey Middle School

The Characteristics, “Curriculum, Instruction, and Assessment” and “Focused Professional Development”, are professional activities conducted amongst the adult school community and are rarely viewed by parents. Thus questions regarding those Characteristics are not ..

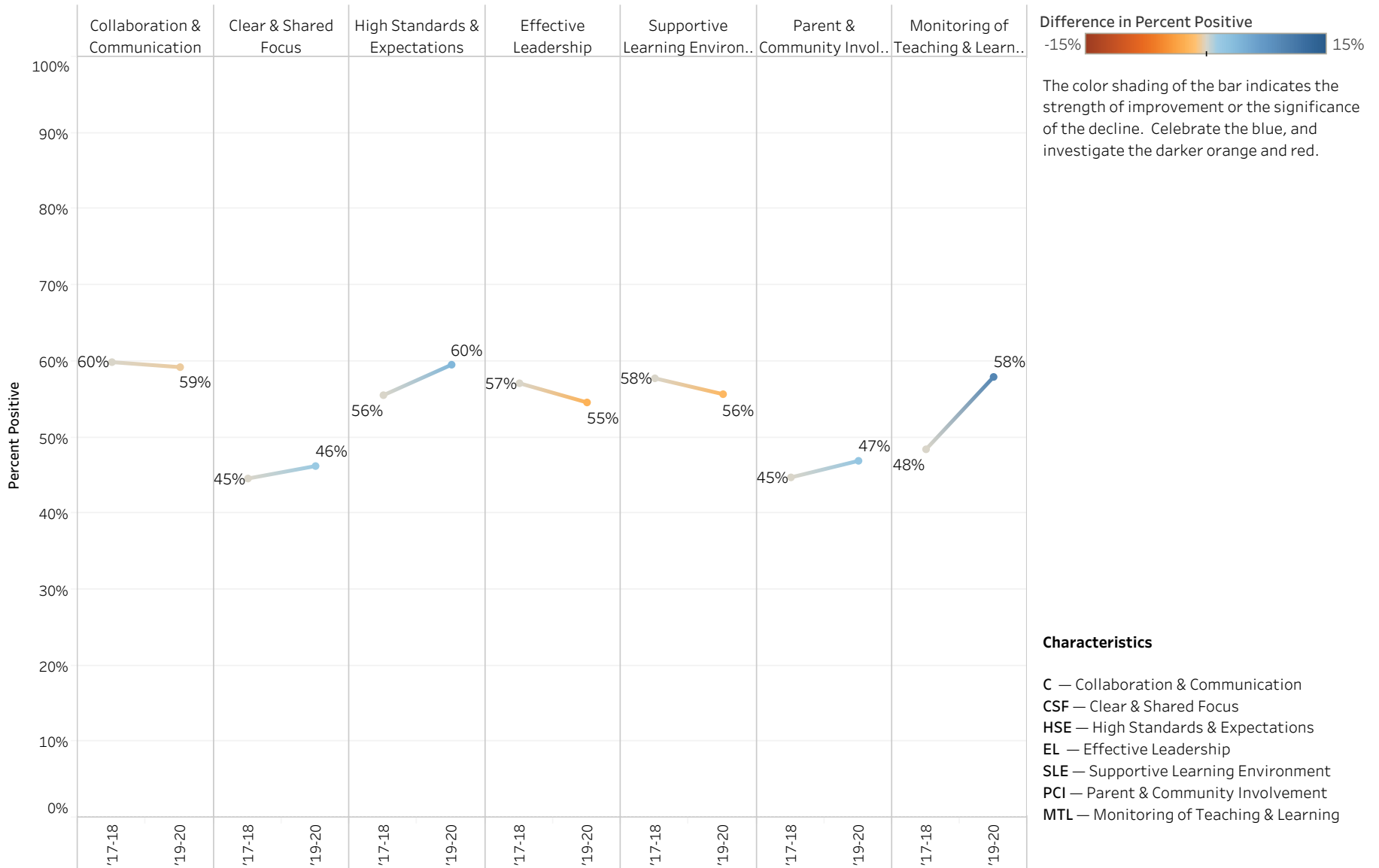


9 Characteristics Comparison - Mean Scores

South Whidbey Middle School

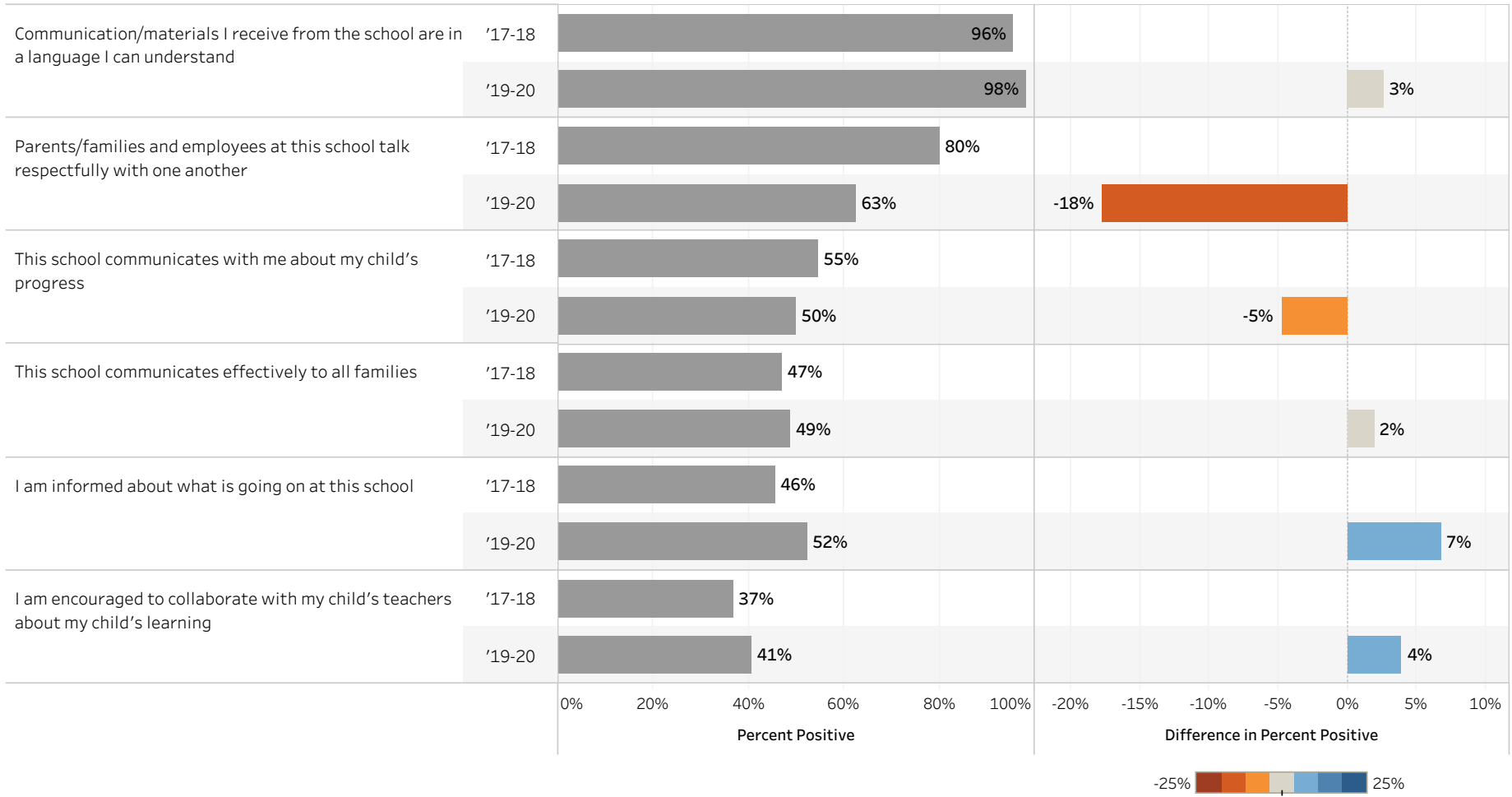


9 Characteristics Comparison - Percent Positive Scores



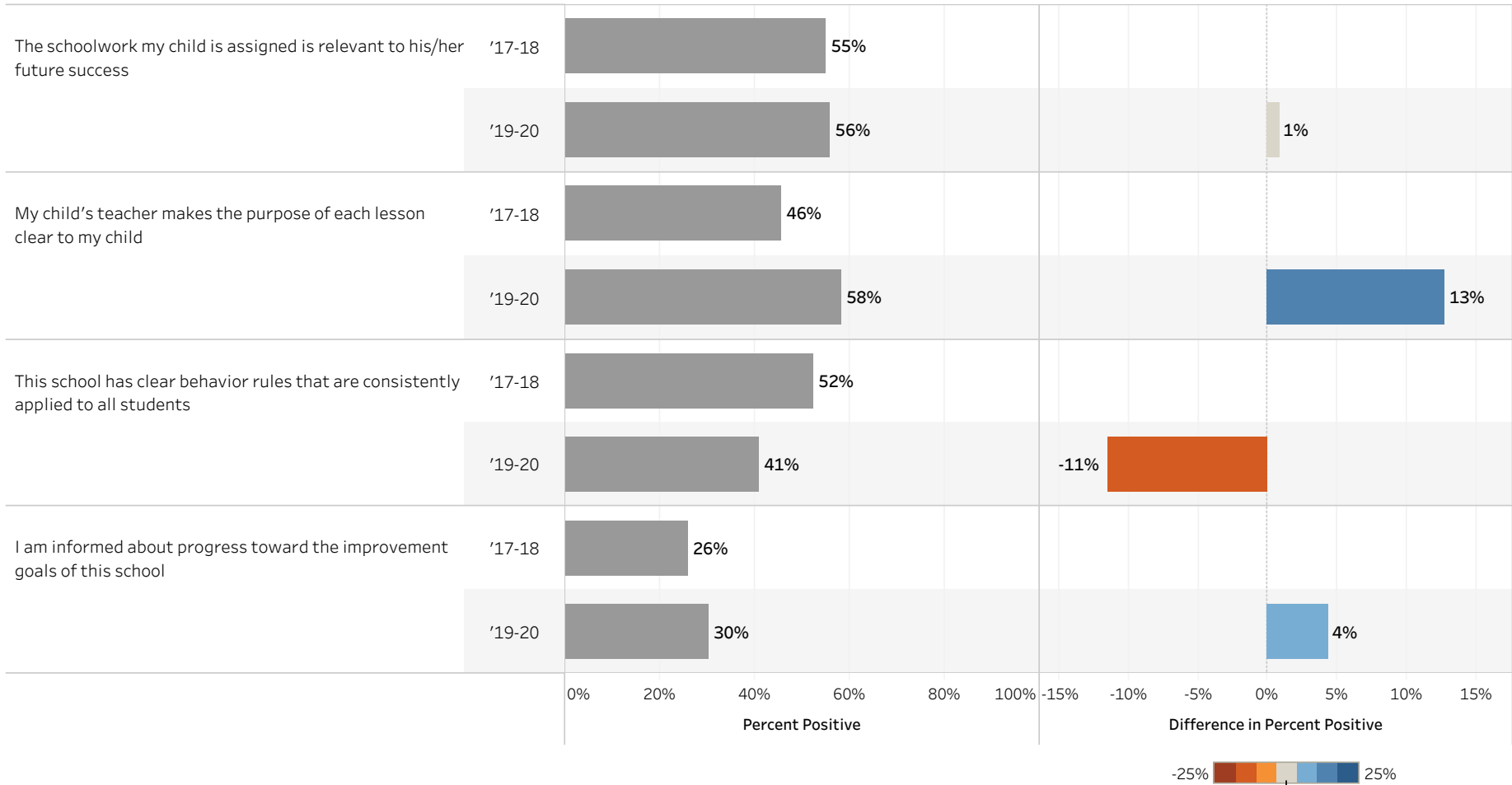
High Levels of Collaboration and Communication

South Whidbey Middle School



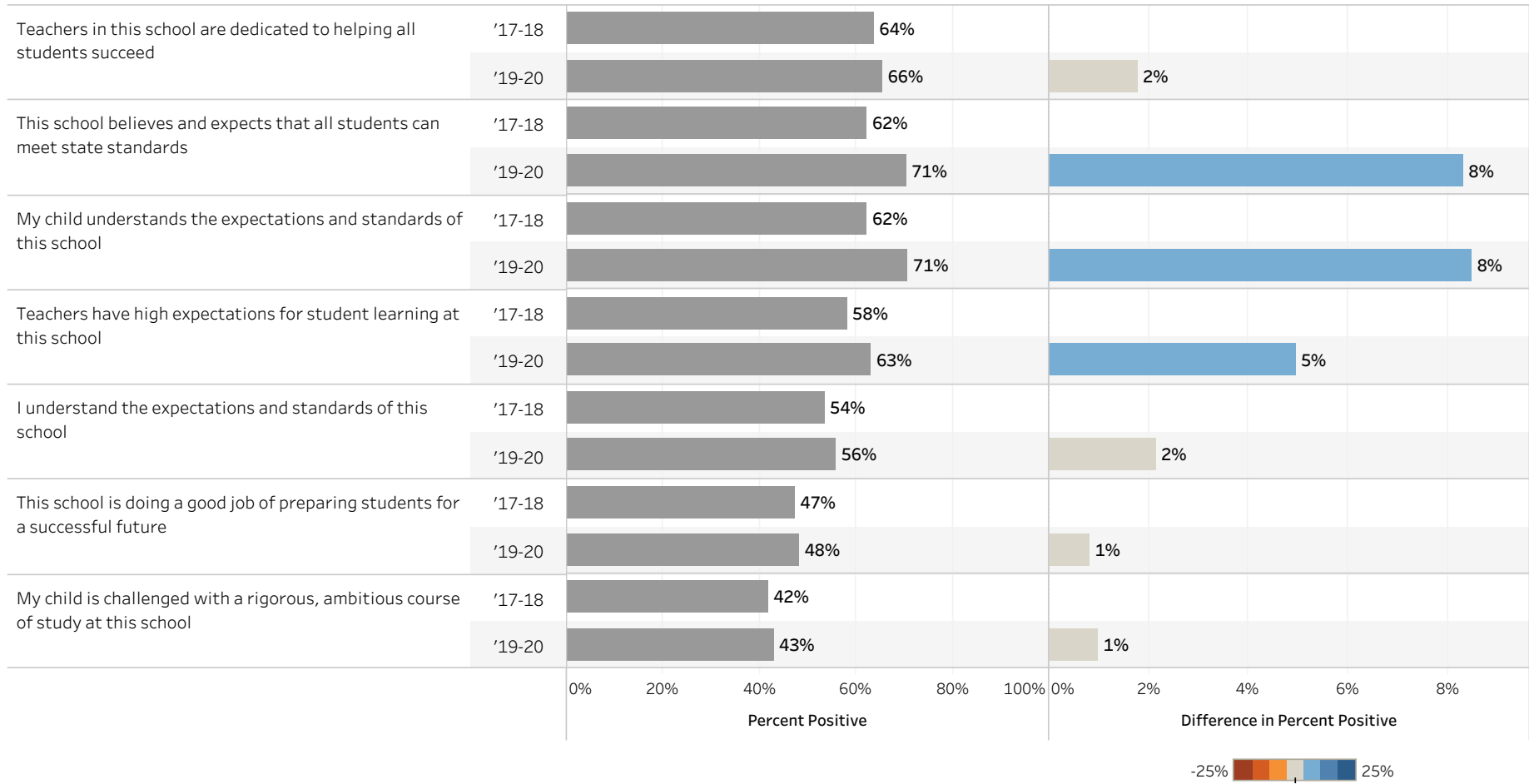
Clear and Shared Focus

South Whidbey Middle School



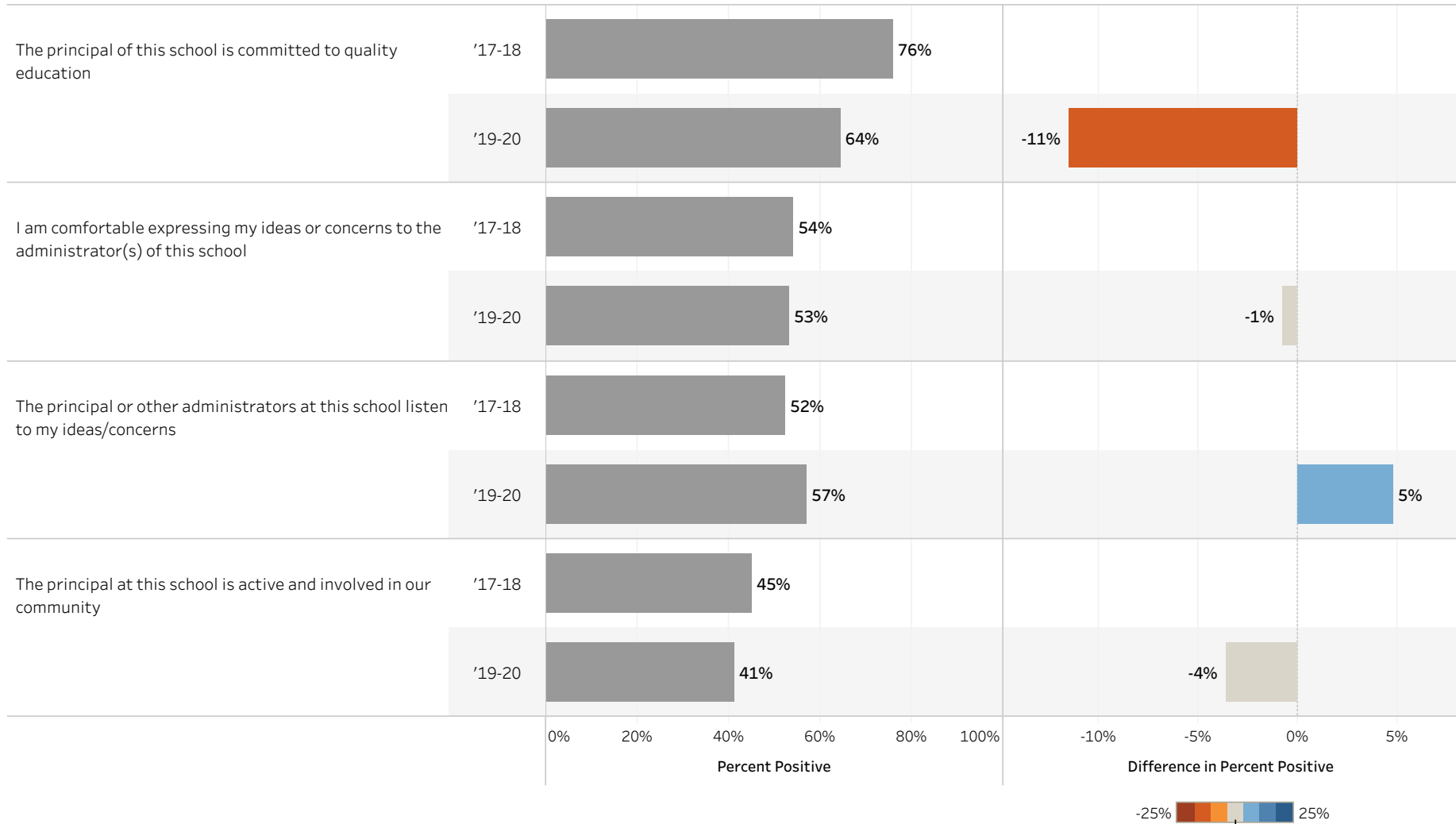
High Standards and Expectations

South Whidbey Middle School



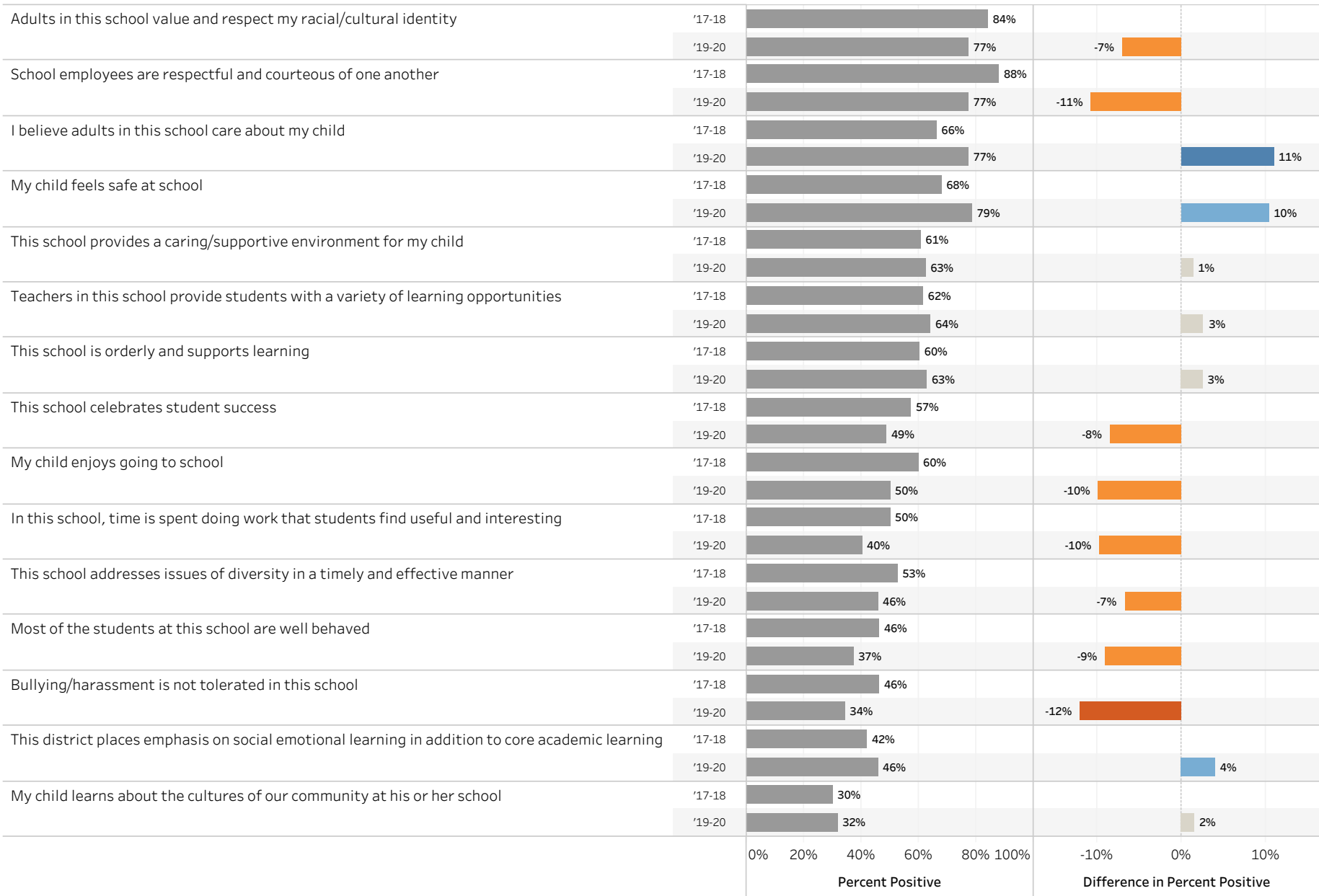
Effective Leadership

South Whidbey Middle School



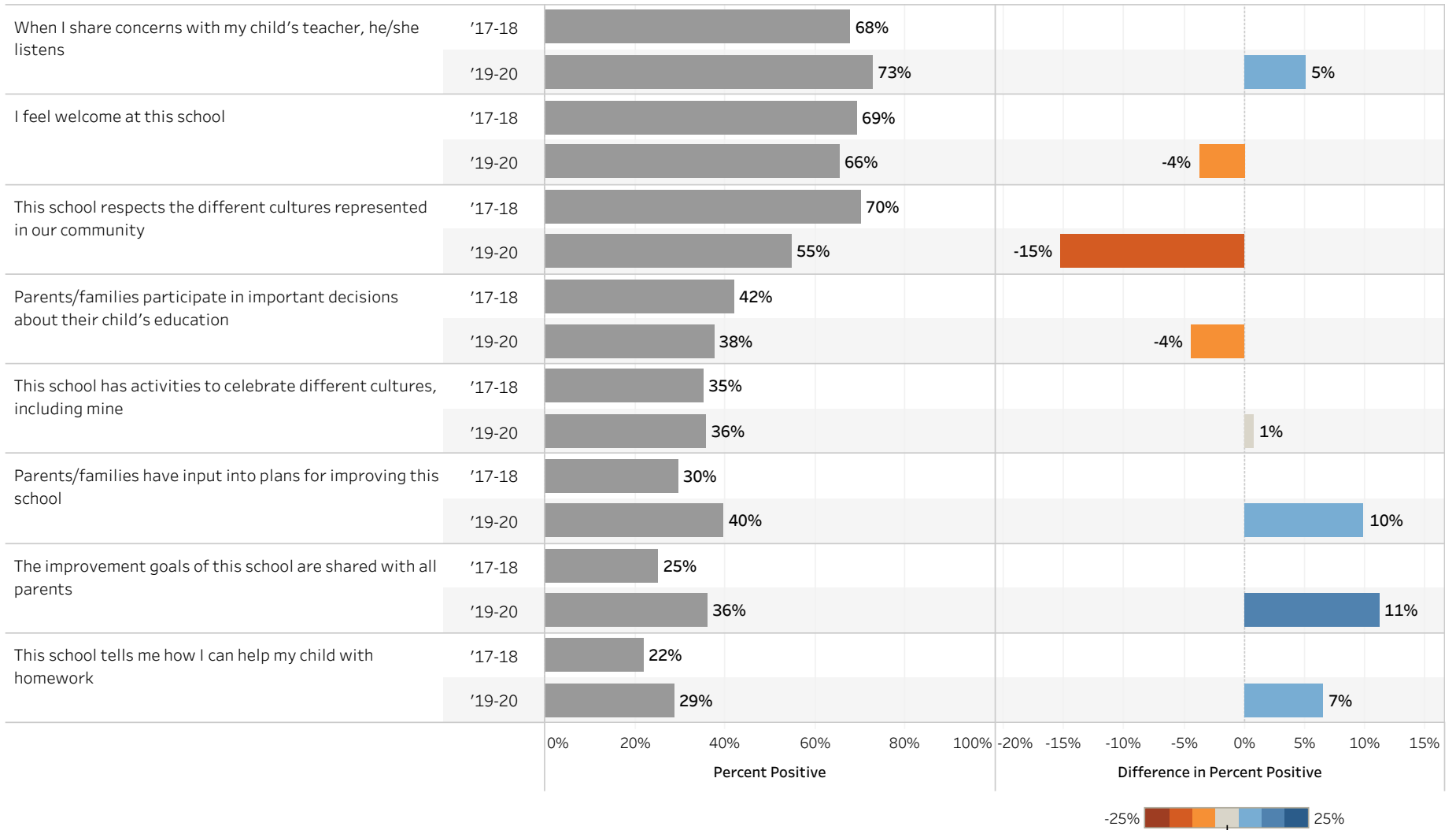
Supportive Learning Environment

South Whidbey Middle School



Parent and Community Involvement

South Whidbey Middle School



Frequent Monitoring of Teaching and Learning

South Whidbey Middle School

